

# Lake Retreat Properties, Inc.



Since 1980...

Our office is conveniently located at the intersection of Routes 626 and 608 at the White House Corner.



Serving Smith Mountain Lake and Surrounding Areas

## "You Shall Reap What You Sew"

In most of the country, fall is the ideal time to plant everything from cool weather crops and perennials to evergreens and shrubs. Warm soil from the summer months will encourage root growth during the fall and early winter. When Spring arrives, the roots will continue to grow and the fall-planted plants will be well established by the time the Summer heat arrives. The ideal time for fall planting is roughly six weeks before the first hard frost. In general, this corresponds to the months of September and October. A few plants to consider are:

- Spring flowering bulbs, such as Tulips, Hyacinths or Daffodils
- Black-Eyed Susan, Daisy, Snapdragon or Poppy seeds
- Maple, Ash, Crabapple, Sycamore or Evergreen Trees
- Garlic, Spinach or Carrots



### Jeanette's Jargon...

The election and the economy are what's on everyone's mind these days. The real estate bubble deflated and many property owners are suffering from its effects. Here at the lake where the market for waterfront property soared and carried prices right along with it, the 2 most visible effects have been the increased volume of properties for sale and the drop in price. Many economists describe this dip as an adjustment to the market and the common theory is that buying during this dip in the real estate cycle is a sound financial move. Whether it's a nice, wooded end-of-the-cove lot with an older cottage, or a lush point with commanding views, the optimal time to buy is now. Sellers are seriously looking at offers, even low ones, and re-thinking their long-term goals. The old adage, "You can't go back" doesn't apply to today's real estate market because we are seeing pre-2005 prices.

Did You Know

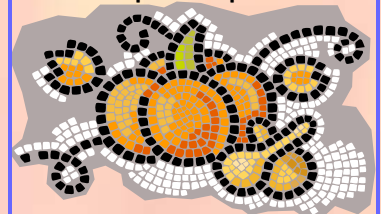


There's a link on the homepage of our website that gives the current water level at the lake!  
[www.lakeretreat.com](http://www.lakeretreat.com)

Make sure you vote on November 4th!

### Did you know?

There is a great pumpkin patch less than a mile from our office! The Morgan Farm's pumpkin patch is the perfect place to find your gourd of choice. Their patch is located off Tolers Ferry Road and open 7 days a week. Don't forget your camera, it's a great family photo op!



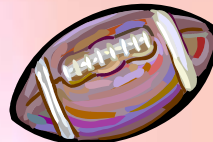
### College football is in full swing and a few quick dips are just what those big game get-togethers need.

**Mexicali Dip:** Stir together a cup of salsa with a cup of sour cream. Add taco seasoning and cilantro to taste. \* Yummy.

**Hot Cheese Dip:** Melt half a block of Velveeta with a cup of salsa over low heat. Add browned ground beef for extra flavor. \*

**Bean Dip:** Combine a can of refried beans, a half cup of salsa, one package of cubed American cheese, and hot sauce to taste. Heat in a medium saucepan for five minutes, or until cheese melts. \* Touchdown \*

**Guacamole:** Simply smash three avocados with two tablespoons lemon juice, dash of hot sauce, and salt and pepper. \* 1st and Goal: Don't forget the tortilla chips or large-sized Fritos.



**Things are winding down from our 2008 rental season and this has been our best season yet. With over 60 rental houses on our program, we continue to provide top quality, right-on-the-water accommodations for thousands each year. It was exciting for us to have families visit from all over the country, and even Europe!**

*Speaking of rentals, this is a beautiful time to visit Smith Mountain Lake—the weather is ideal, the leaves are picture perfect, and you feel as if you are the only one aware of this great treasure.*

# Lake Retreat Properties, Inc.

Address Service Requested

PRESORTED  
STANDARD  
U.S. POSTAGE PAID  
HUDDLESTON, VA  
PERMIT NO.24

**Jeanette Childress Owner/ Broker**

6760 White House Road  
Huddleston, VA 24104

540-309-6002 cell

Phone: (540)297-6002 (800)421-6980 24-Hour Voicemail

Email: [lakeretreat@hotmail.com](mailto:lakeretreat@hotmail.com)

**WE'RE ON THE WEB!**  
**WWW.LAKERETREAT.COM**

*Sales and Rentals—Call for Brochure—  
On beautiful Smith Mountain Lake*



Are you considering selling your property?  
Call on the experienced staff at Lake Retreat Properties.

## Properties for sale.....

Get more information and see lots of photos at [www.lakeretreat.com](http://www.lakeretreat.com)



### **New Listing in Village East Lacustrian (lake dweller)**

4BR beauty, tucked away on a deep-water point in a wide cove near marker R- 26. \$749,000.



Both homes currently on our vacation rental program!

### **New Listing in High Point Delightful**

3 level contemporary perched on a lot w/views all around & steps to a party dock & deep-water finger cove near marker R-27. \$575,000.



### **New Listings in Mountain View Shores**

#### **Mountain Majesty**



**In-Demand Rental \$1,099,000.**

3BR, 3BA, 2 spacious sunrooms, hot tub, multilevel lakeside deck & breathtaking views.



**New Construction \$649,000.**

4BR, 3BA, gourmet kitchen, 2 lakeside decks, large sandy beach, deep water & stunning views.



**A Feast for the Eyes!!  
Give us a call today to see these amazing homes!**



### **Introducing Wil Childress**

Our newest agent to join the Lake Retreat list of knowledgeable, professional REALTORS waiting to assist you! Wil is a lake native and a 2007 graduate of University of Virginia's College at Wise.

[wil@lakeretreat.com](mailto:wil@lakeretreat.com)